

Cambo Village Hall

NE61 4BA

Directions from the North or South

Turn off the A696 following signs for Cambo and Wallington Hall on the B6342

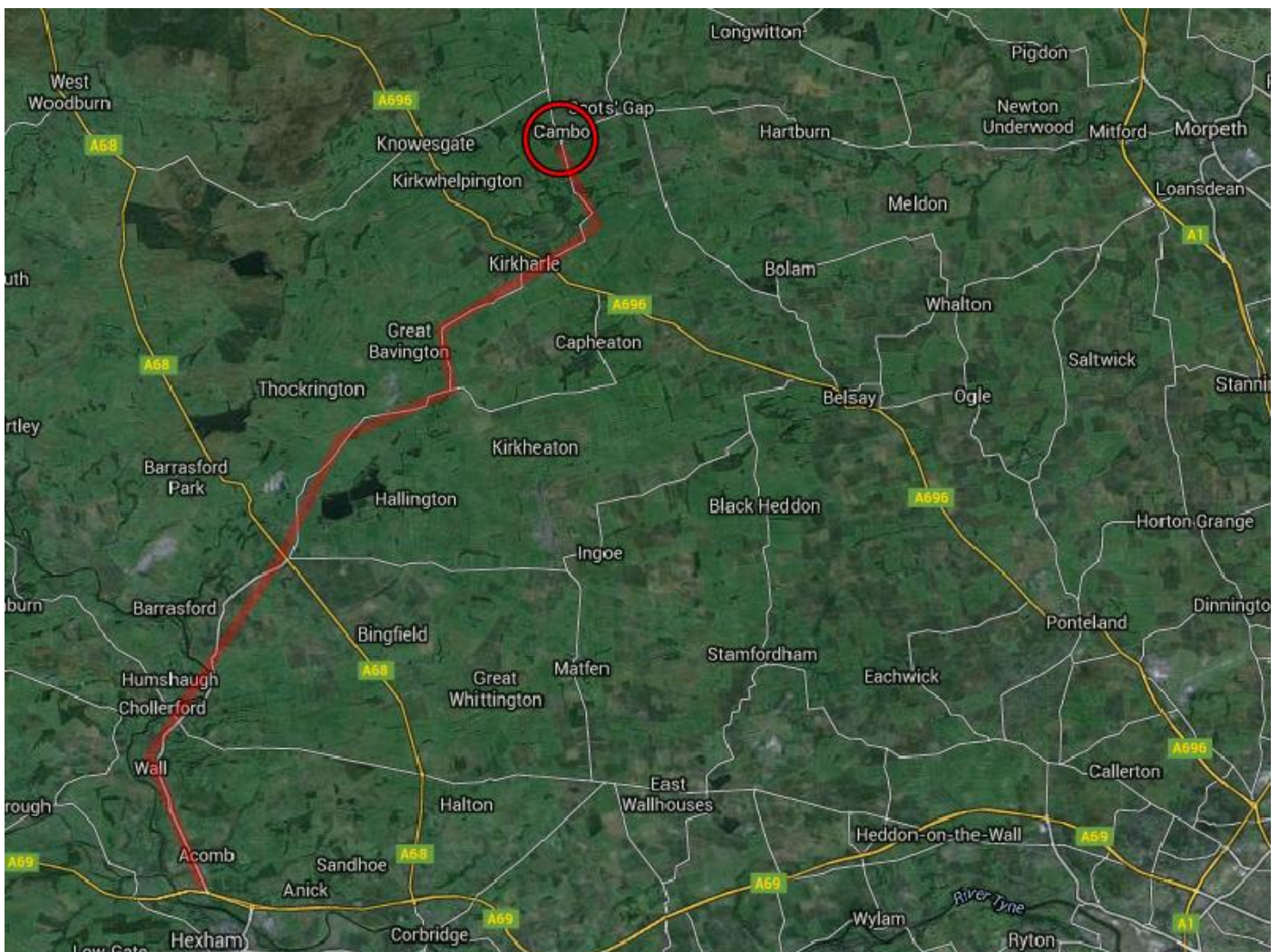
Directions from the East

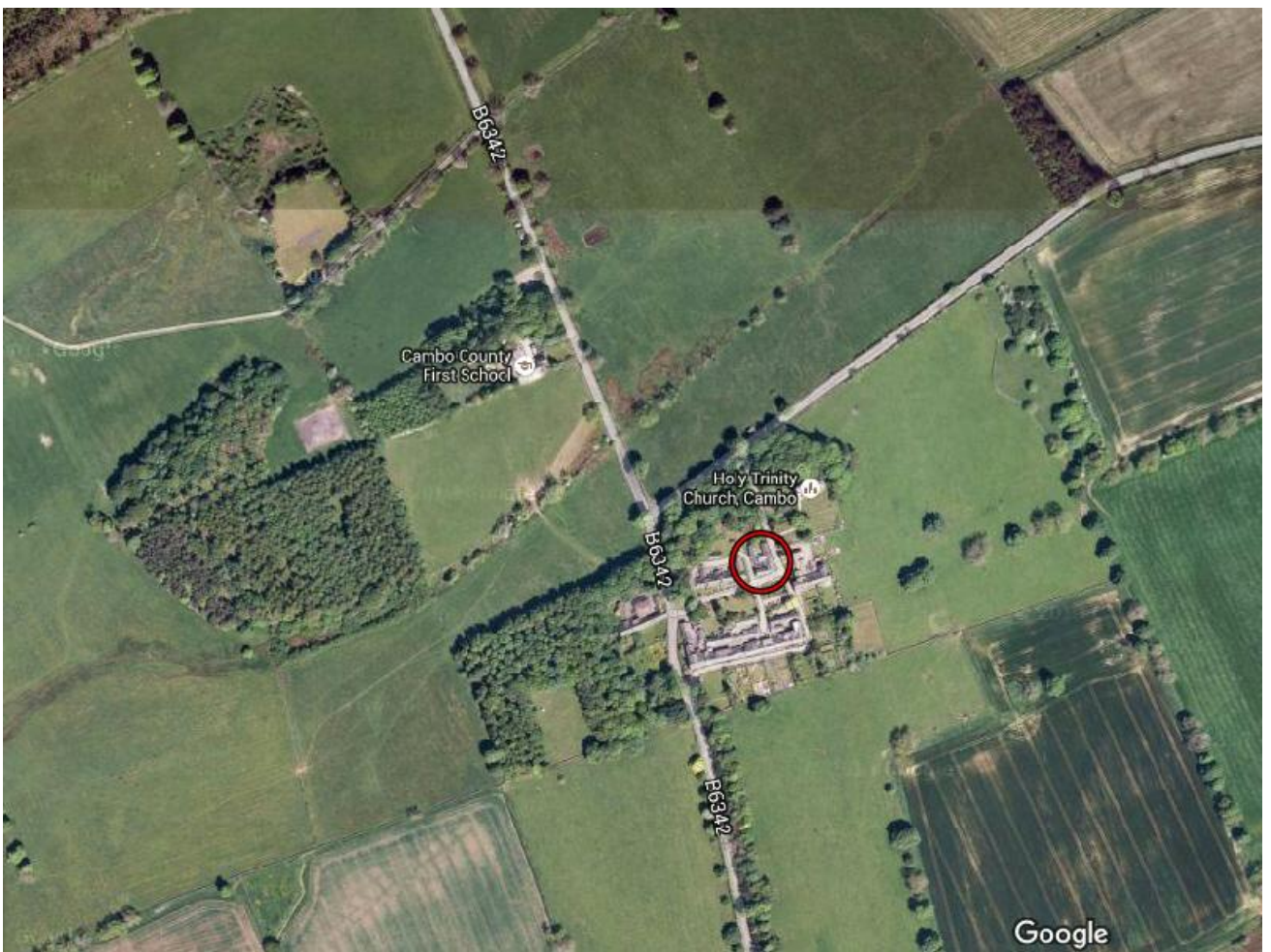
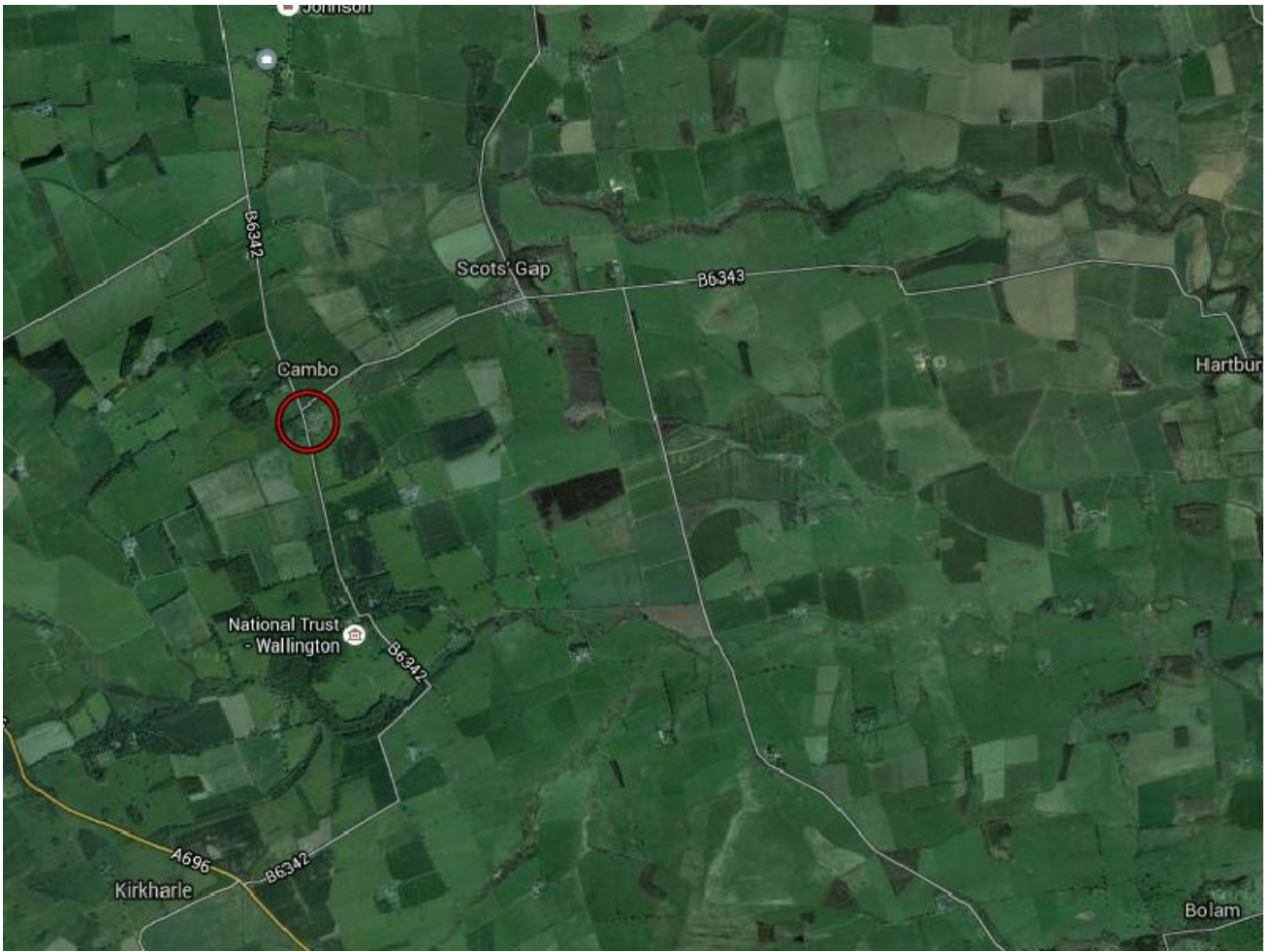
Follow signs for Cambo on the B6343 from Morpeth (about 20mins from Morpeth)

Directions from the West

Turn off the A69 at Acomb to join the A6079. Cross the A68 to follow the B6342. Dog leg across the A696 to continue on the B6342 to Cambo and Wallington Hall (about 30mins from Acomb).

Below are a set of maps to explain further.







If you get into any difficulties my mobile number is 07715266657. There is a 3G signal in the area and some mobile phones work better than others.